

STAINLESS STEEL GRAB BAR

MODEL:  
AOTA - GB



PART NUMBERS:

AOTA-GB-001-GAA001-S-D1.25-L12 12" Satin Finish Grab Bar	AOTA-GB-001-GAA001-P-D1.25-L12 12" Polish Finish Grab Bar
AOTA-GB-001-GAB001-S-D1.25-L16 16" Satin Finish Grab Bar	AOTA-GB-001-GAB001-P-D1.25-L16 16" Polish Finish Grab Bar
AOTA-GB-001-GAC001-S-D1.25-L18 18" Satin Finish Grab Bar	AOTA-GB-001-GAC001-P-D1.25-L18 18" Polish Finish Grab Bar
AOTA-GB-001-GAD001-S-D1.25-L24 24" Satin Finish Grab Bar	AOTA-GB-001-GAD001-P-D1.25-L24 24" Polish Finish Grab Bar
AOTA-GB-001-GAE001-S-D1.25-L30 30" Satin Finish Grab Bar	AOTA-GB-001-GAE001-P-D1.25-L30 30" Polish Finish Grab Bar
AOTA-GB-001-GAF001-S-D1.25-L32 32" Satin Finish Grab Bar	AOTA-GB-001-GAF001-P-D1.25-L32 32" Polish Finish Grab Bar
AOTA-GB-001-GAG001-S-D1.25-L36 36" Satin Finish Grab Bar	AOTA-GB-001-GAG001-P-D1.25-L36 36" Polish Finish Grab Bar
AOTA-GB-001-GAH001-S-D1.25-L42 42" Satin Finish Grab Bar	AOTA-GB-001-GAH001-P-D1.25-L42 42" Polish Finish Grab Bar
AOTA-GB-001-GAI001-S-D1.25-L48 48" Satin Finish Grab Bar	AOTA-GB-001-GAI001-P-D1.25-L48 48" Polish Finish Grab Bar

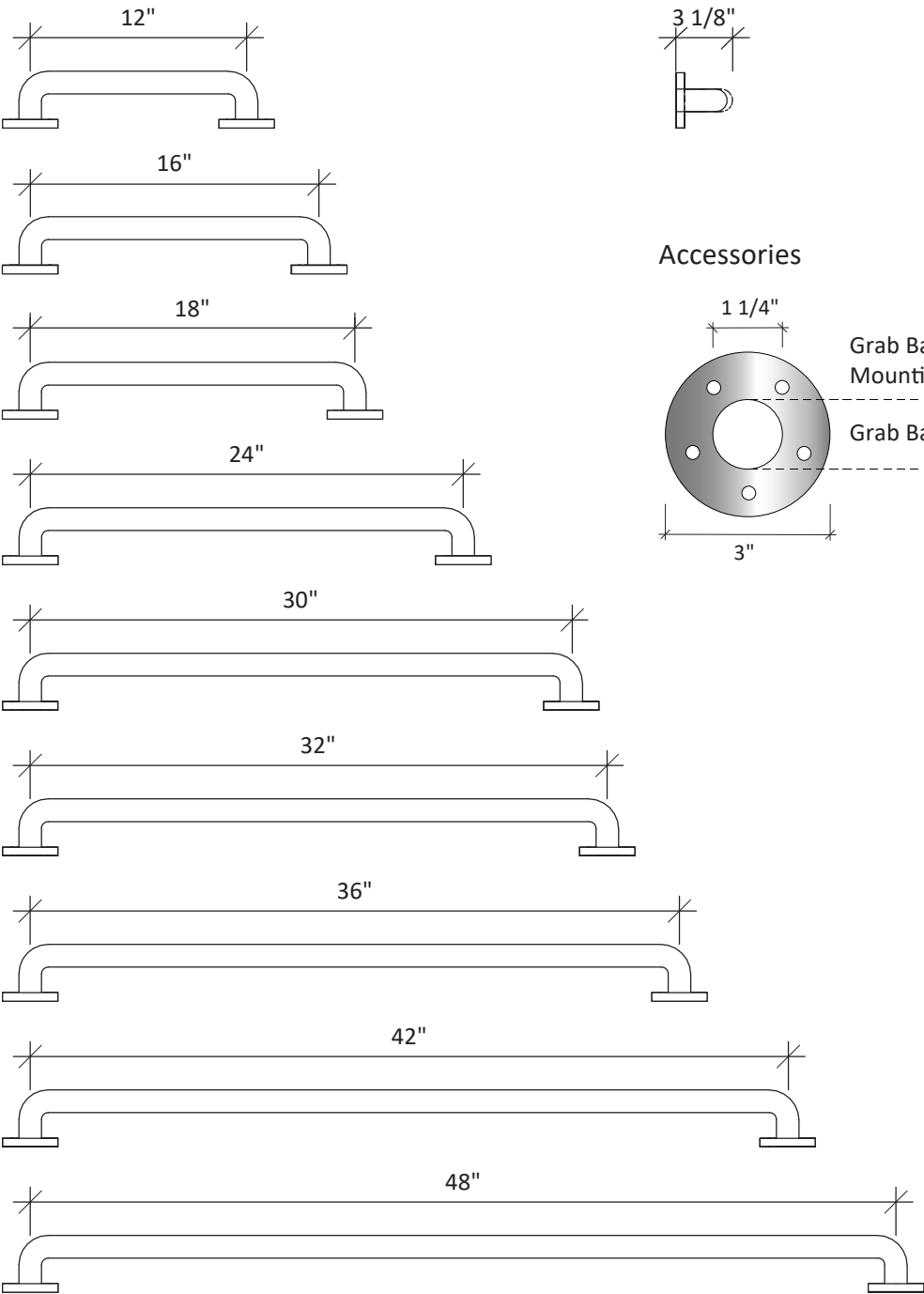
MECHANICAL DATA:	
Length:	see part number
Height:	3" (78mm)
Depth:	3 5/32" (80mm)
Tube Diameter:	1 1/4" (32mm)
COMPOSITION:	
304 Stainless Steel	
INSTALLATION:	
Includes Stainless Steel Screws to Install into Adequate Structural Blocking.	

FEATURES:

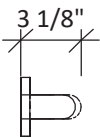
- All parts are 18-8 (304) stainless steel
- Mounting flanges are 3" (78mm) in diameter, ½" (12mm) thick
- Mounting flanges have 5 holes for attachment to stainless steel screws in Adequate Structural Blocking

STAINLESS STEEL GRAB BAR

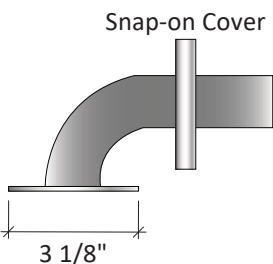
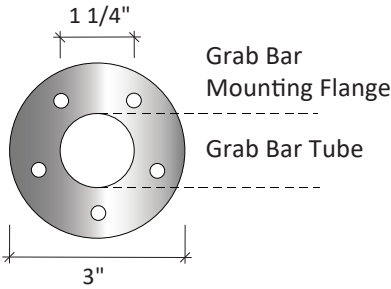
Size-12"-48"



Side Elevation



Accessories



Hardware

S/S Screw

